

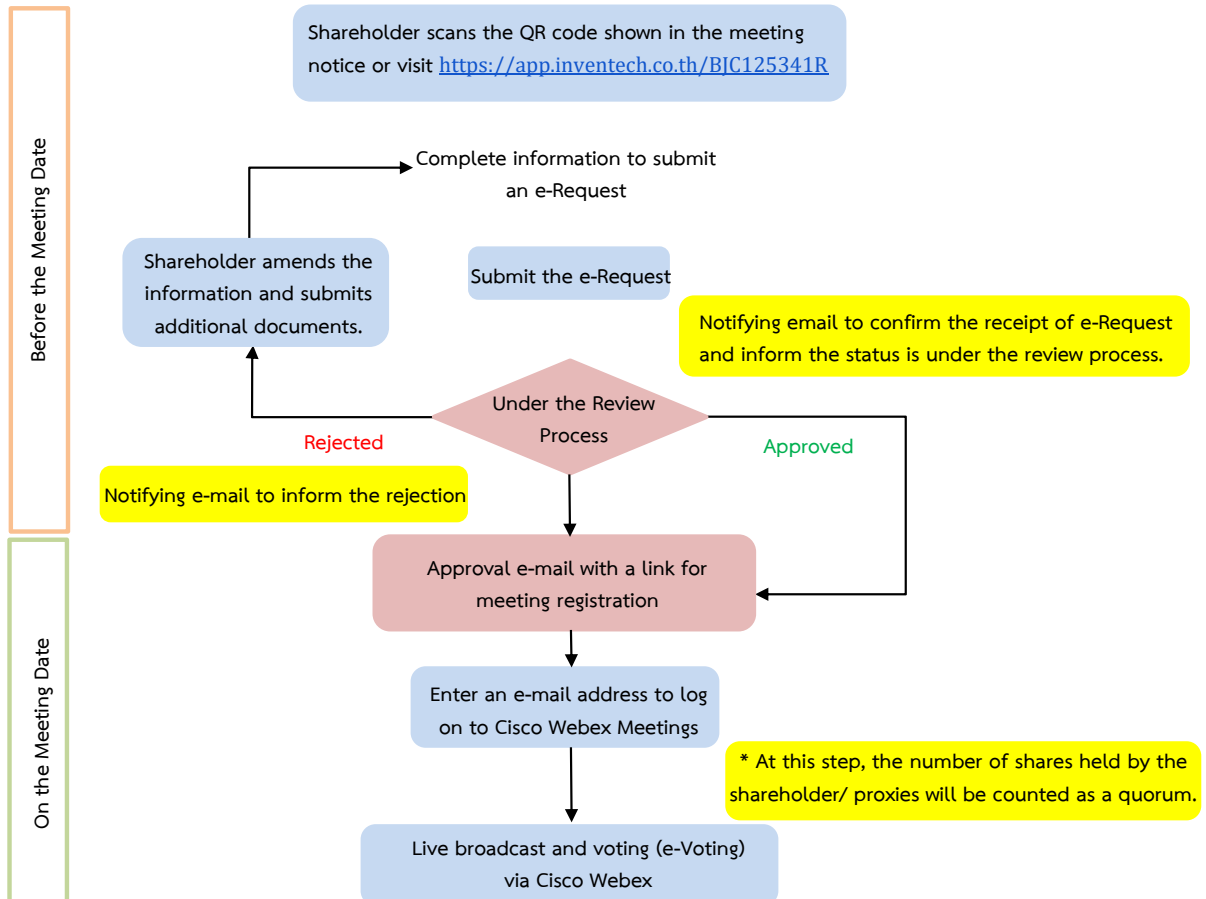


Berli Jucker Public Company Limited

(Translation)

Procedures related to attendance of the 2024 Annual General Meeting of Shareholders

Flowchart for the Meeting Attendance via e-Meeting



Note

- For a proxy appointed by multiple shareholders:
 - Such proxy may press the "Switch Account" button to log into other accounts, and the votes and the meeting quorums of previously used accounts will still be included as the base number of votes.
- Leaving the meeting
 - Meeting participants may press the "Leave Meeting" button to leave the meeting. As such, the votes of shareholders/proxies will be annulled for the remaining agenda items that have not yet been voted on.

